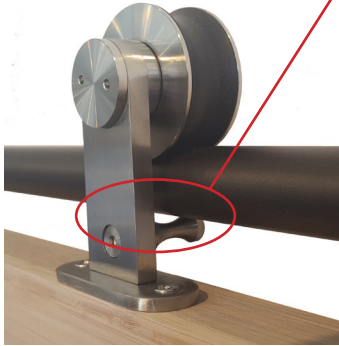
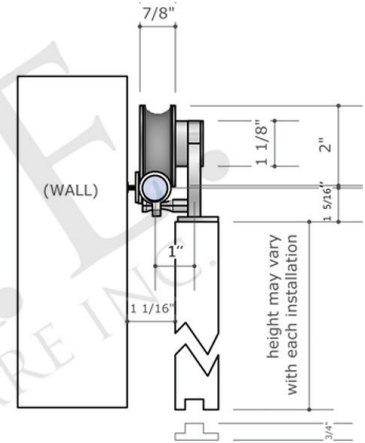
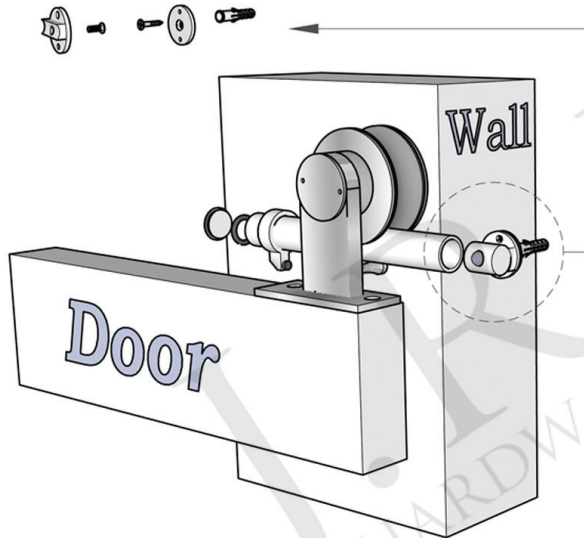


Anti-Lift Technology



CY-151



Maximum Track weight : 150 Kg (330 Lbs.)
Maximum wood thickness 45 mm (1 3/4")
Simple installation
Easy Glide rollers
Space saving design
Single lengths of up to 4m (13')



CY-150



SPECIFICATIONS:

Door Thickness: 1 1/4" to 1 3/4"

Finish Options: Brushed Stainless, Matte Black, Bronze

Material: Stainless Steel

Fabrication: Some site fabrication may be required.

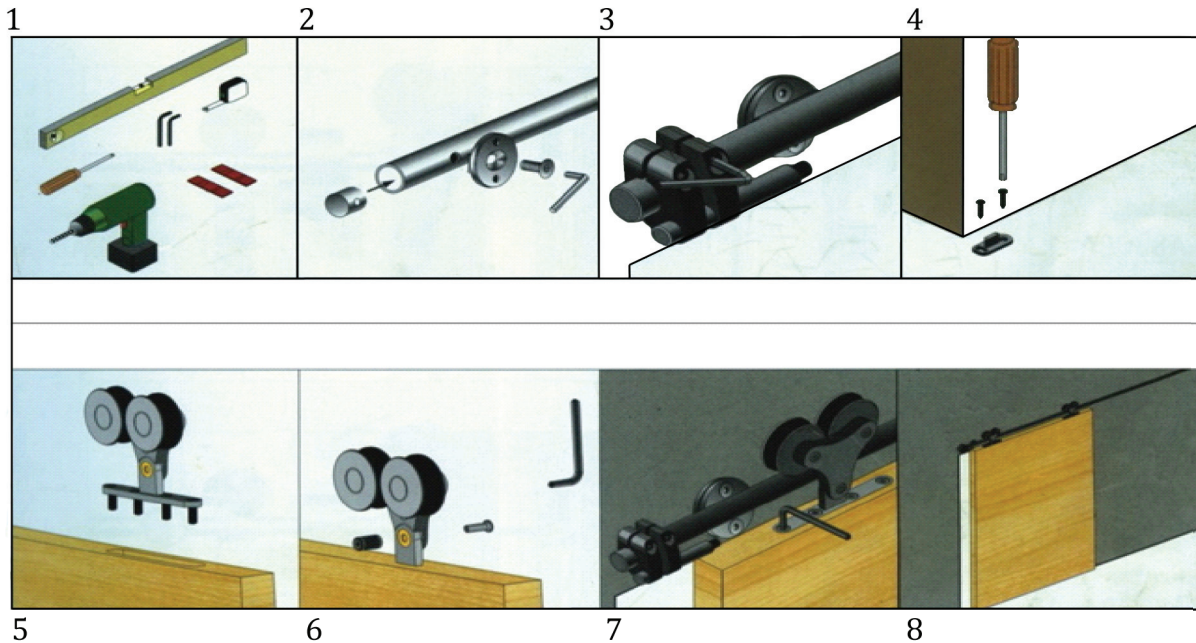
JRE Hardware barn door hardware has the following weight allowances:

- Weight 80Kgs: max distance between the clamps = 1/2 the width of the door
- Weight 80-120Kgs: max distance between the clamps = 1/3 the width of the door
- Weight 120-150Kgs: max distance between the clamps = 1/3 the width of the door

The maximum working load of the CY150 & 151 should not exceed 150Kgs

Installation

CY- 150-151 TOP MOUNTED HANGING SLIDING DOOR KIT -- Instruction Sheet



1: Tools for installation

2: In a straight line on the guide rail measure and even spacing or according to solid backing for the mounting supports to be affixed to. With a 1/8th drill bit drill a pilot hole at the measured intervals. Be careful to ensure that they are perfectly straight. Next follow through with a 3/8ths bit suited for stainless steel. (Wall mount spacing must be increased with excessive weight. See Below.) When drilling is complete slide the mounting anchor to the desired position in the guide rail. This is easily done with a dowel or a stop from the opposite end in the required position. Thread mounting studs on tight ensuring they are all in a straight line.

3: Slide on door stops to either end of the guide rail at the desired intervals. Final adjustments may be made after the door is hung. Place the end caps in both ends of the rail and lightly tap until they are in the required position. Last mount the door rail at the desired position with competent backing in the wall. (Scribing supports ensures an accurate installation.)

4: Secure the floor guide to the floor ensuring that the door is standing in the desired position.

5: Mount the door rollers on the top of the door 3" to 5" in depending on the size of the door being used. For seamless instillation router 1" slots to accommodate the hardware.

6: Hang the door on the rail and ensure proper placement of the floor guide.

7: Make any final adjustments necessary.