

J.R.E.

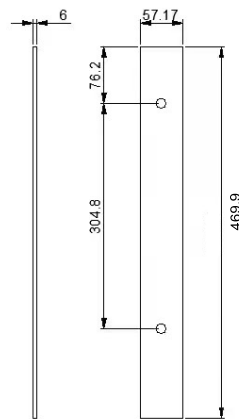
HARDWARE INC.

JRE HARDWARE INC
1870 DUFFERIN CRES
NANAIMO BC
V9S 1H1 (250) 824.5555
WWW.JREHARDWARE.COM

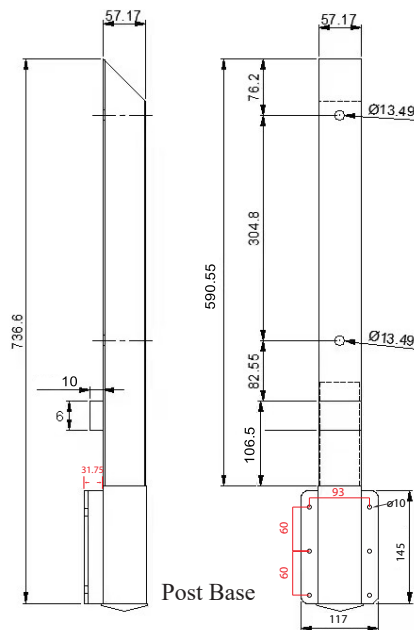
MODEL N^o: SHORT POST

ISSUED: AUGUST 2023

REVISED:



Compression Plate



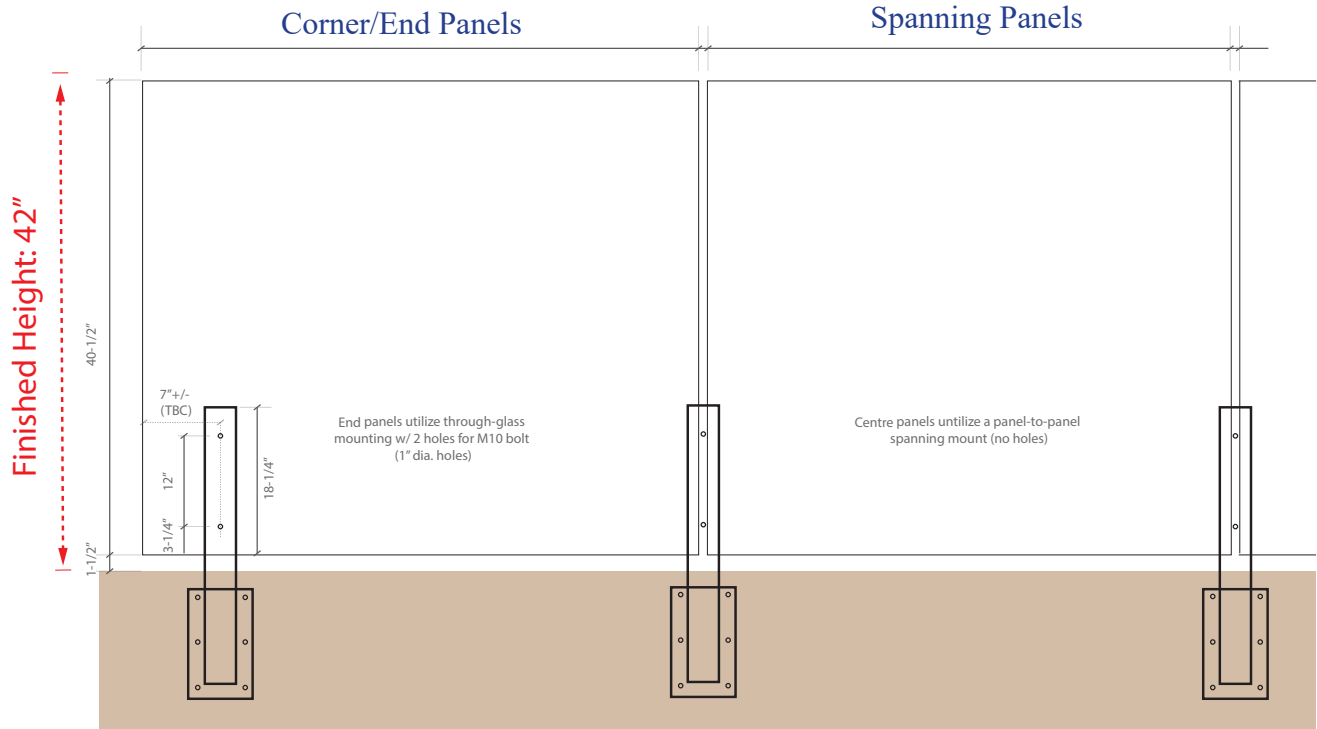
Post Base

Specification

Extruded 6061 T6 Aluminum. Can accommodate glass thicknesses of 10mm to 12mm however is recommended for use with 12mm laminated glass panels.

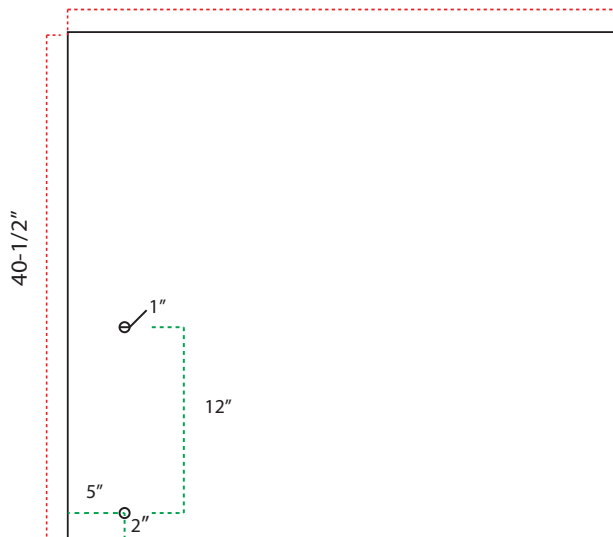
Installation

Mount directly into adequate substrate. Optional SDS structural screws have been provided with product (quantity 6). Can be used to span panels or using panels with pre-fabricated holes. Span between posts should not be greater than 48"/1219mm with glass maximum finished glass height at 42"/1066mm. Compression plate is secured to post base with two (2) M10 bolts. Top of panels can be further reinforced with glass clamps. Project specific engineering may be required and is the sole responsibility of the buyer. Drawings included in this technical data package are for conceptual purposes only. Please consult local building codes and regulations before undertaking any railing project.



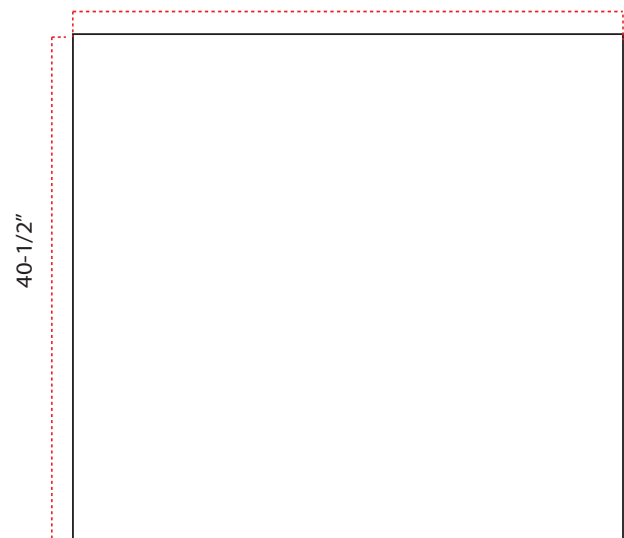
Corner/End Panels

Sizes Available: 45"



Spanning Panels

Sizes Available: 34, 36, 38, 39, 42, 45, 48"



Specification

12 mm Laminated Panel 6mm clear tempered + .76 PVB Interlayer + 6mm clear tempered. Panels meet the requirements of ASTM C1172 Standard Specification for Laminated Architectural Flat Glass. Our laminated glass (> .76" PVB interlayer) meets the safety glazing requirements of ANSI Z97.1-2015 and 16 CFR 1201, Categories II.